

Kings Royal

OWEN SOUND, CANADA.

A Most Delightful
Place to Spend
Your Holidays on
Georgian Bay

King's Royal

Hotel

PARK AND RESORT

FRANK H. NORMAN, Manager.

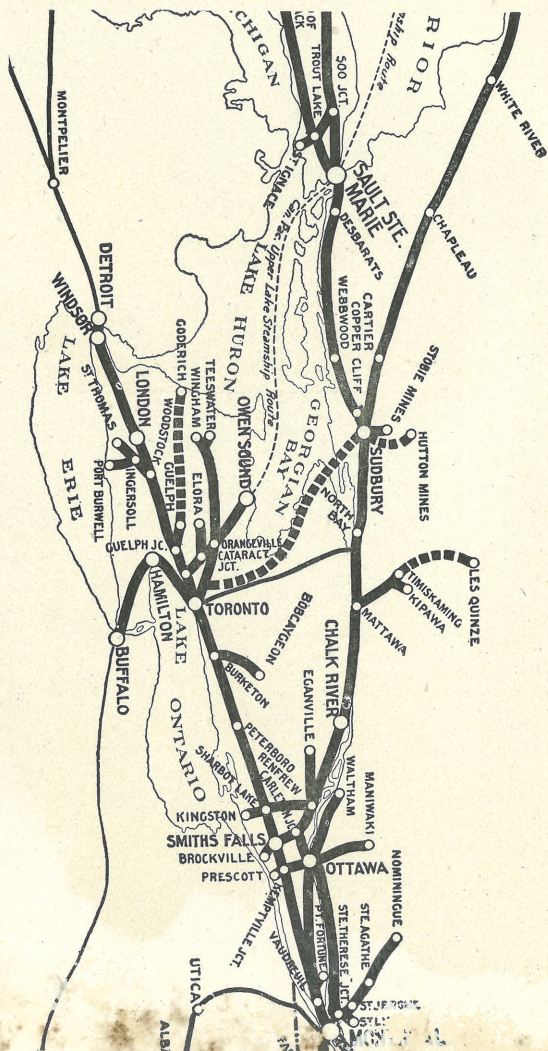
BALMY BEACH

OWEN SOUND
PARK CO.

LIMITED

Owen Sound, Can.

CANADIAN PACIFIC RAILWAY CONNECTIONS FOR OWEN SOUND.



KING'S ROYAL HOTEL

ON THE GEORGIAN BAY

BALMY BEACH

Owen Sound, Canada.

Introduction

With the advent of summer comes the vexatious question amongst that class of people who leave their homes in the heated summer to find comfort and coolness in some spot that nature has favored and adapted for the purpose. It is with a view of relieving that question of "Where shall I go?" that we submit this booklet to its readers, in order to place before them a description of what they have to offer the seekers after the aforesaid comfort and coolness, and to respectfully solicit their patronage.



LOOKING TOWARDS OWEN SOUND FROM TOWER OF HOTEL



A VIEW OF THE BEACH

Owen Sound and Environments

Nowhere in Northern Ontario is there a more delightfully situated spot than Owen Sound and its environments. Nestling as it does on the southern extremity of Georgian Bay, and on the shore of a beautiful water front, with its many inducements to the shipper and the tourist, it may be truthfully said to be the peer of all northern Canadian towns.

**KING'S ROYAL AUTOMOBILE GARAGE
FREE TO GUESTS**



PARK GROUNDS FROM VERANDAH OF HOTEL

In its immediate vicinity are to be found some of the most historical and picturesque spots in the north, amongst which, at a spot three and one-half miles from the town, and situated on the western shore of the bay, is to be found a place that has been in former years a camping ground for the once great tribe of Huron Indians. This place, comprising over a hundred acres of well-wooded land, the shores of which are washed by the cool waters of Georgian Bay, has within the past few years been converted into a beautiful park, and as a resort for the tourist who finds time to visit this interesting section. In the immediate vicinity of this beautiful place are to be found many natural facilities for the enjoyment of the pleasure seeker, and which are described in these pages.

The Park

The King's Royal Park may be truthfully said to be one of the most ideal places in Northern Ontario to spend a holiday in, for it possesses many advantages that are not found elsewhere in the north. It is well wooded and within the past four years has been cultivated to a state of perfection that was only attained by a vast amount of labor and expenditure. Numerous roadways have been cut and built through its woods and along its shores, and kept in good condition, so that its patrons may enjoy a walk, a wheel, or a ride through its shades or breezes. A word may be said of its shores, which are of such a gradually receding nature that they are perfectly safe, and the most timid may wade into its cool waters without fear. It is a perfect paradise for children.



PUBLIC BALCONY

The Hotel

The Company has made a fitting finish to their beautiful park by erecting therein a magnificent modern summer hotel with accommodation for two hundred and fifty guests, and as a cost of over \$70,000. It is their intention to cater in a first-class manner to the wants of the summer resorter and the tourist. The accompanying photographs fail to give any adequate idea of the situation or appointments of this beautiful hostelry, for being



VIEW OF ROTUNDA

a modern building, it has been laid out with a view to the comfort of the guest in the heated summer. It is amply supplied with verandahs and balconies facing both on the lake and on the park, many of them being privately connected with the rooms, thus affording the guest seclusion if so desired.

There is also provided for the guest everything that can be found in a first-class city hotel, viz., a large and spacious rotunda, beautifully furnished, in which will be found the office, news and telegraph stand, check and baggage rooms, smoking and lounging rooms, and connected therewith a new and up-to-date billiard room, barber shop, cafe, ladies' parlors and writing rooms. There are also situated on the second floor of the hotel lounging



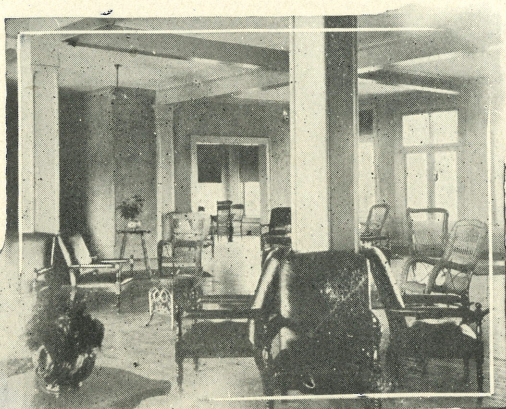
VIEW OF MAIN VERANDAH

rooms, parlors, etc., and devoted exclusively to the use of the ladies. The bedrooms are all large and airy and may be had singly or en suite, also with private baths and private balconies connected. Each and every floor is supplied with bath rooms and lavatories and the most modern sanitary appliances.

The cuisine will be of the best and perfect service is assured. There are several private dining rooms connected with the main dining hall, and guests can be served privately if so desired.

The **King's Royal Hotel** is under the management of Mr. F. H. Norman, a thoroughly competent summer hotel manager, whose delight is catering to wishes of the tourist trade.

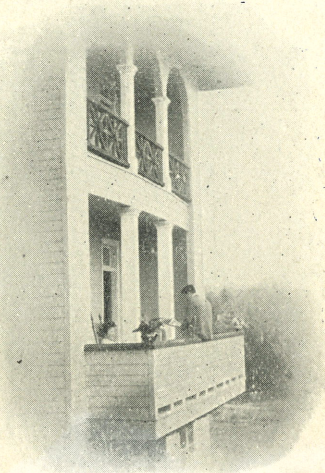
The company have their own water system, and the hotel is fitted throughout with modern appliances for protection in case of fire. The drinking water is pure and perfectly filtered. The hotel is lighted throughout by electricity, and an electric bell service in connection with ever room.



VIEW OF ROTUNDA SHOWING GENT'S LOUNGING ROOM

Amusements

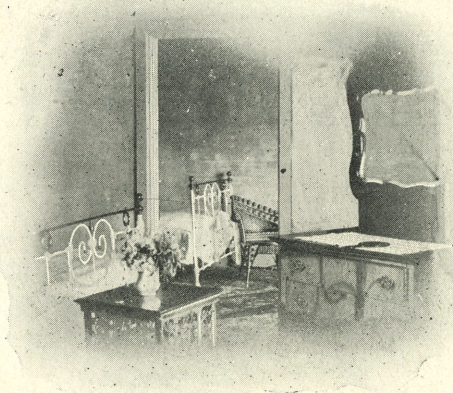
In the way of amusement the Company has not been negligent, having provided numerous means of amusement. In the hotel will be found billiards, ping pong, etc., and an orchestra will be in attendance during meal hours and evenings. Saturday evening hops, which were in such favor the past seasons, will be continued this season, and the management will be pleased to contribute any other entertainment that may be necessary. Outdoor amusements have been amply provided for. There is a summer theatre situated in the park and within a short distance of the hotel, which will be furnished with the best and cleanest of attractions. There are also within the park grounds tennis courts, croquet lawn, bowling green and golf links. Bathing houses for use of guests.



ONE OF THE PRIVATE BALCO



THESE PLACES ARE WITHIN EASY DISTANCE OF THE PARK
AND ARE WELL WORTH A VISIT.



A VIEW OF SUITE OF ROOMS

Boating, Bathing and Fishing

The bay on which the hotel is situated is admirably adapted for boating and sailing, and boats may be had by applying to the boathouse in connection with the hotel. The company have their own boathouses, which are in charge of reliable attendants.

In the immediate vicinity of the hotel are to be found numerous drives over well-kept roads, and which lead to interesting sections, amongst which might be mentioned Inglis Falls, Indian Falls, Jones Falls, etc., any of which are well worth a visit. Conveyances can be had by applying at the office of hotel.

Amateur photographers will find the park and its environments a veritable paradise, and plenty of opportunity is afforded the use of camera. The landscape and

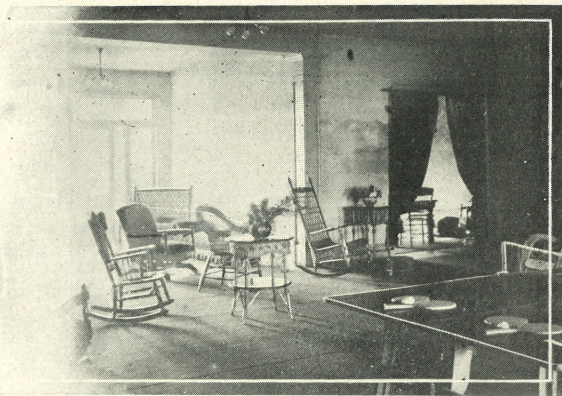
water scenery is unsurpassed. The roads leading to the different attractions are well kept and are cut through many picturesque parts of the country. A dark room for developing has been erected in the hotel, and is entirely free to guests.

Motor cars will be well housed in the Park Garage.

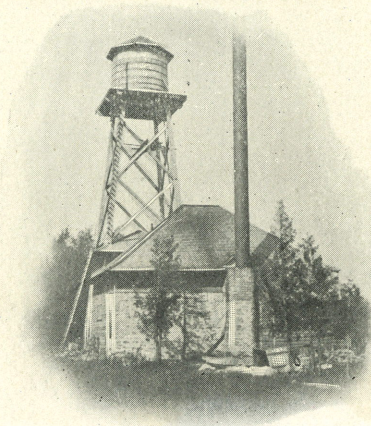
In the immediate vicinity of Owen Sound are to be found many brook trout preserves, to which access may be had by applying to the management. There is also within easy distance of the hotel Lakes Mary, Francis and Bass, which are teeming with black bass, pickerel, etc., and the management will be glad to furnish accommodation to guests wishing to indulge in the piscatorial sport.



ONE OF THE PRIVATE DINING ROOMS



VIEW OF LADIES' LOUNGING ROOM AND PARLOR



WATER TOWER AND ENGINE HOUSE

Side Trips

Side trips can be made from Owen Sound to any of the Georgian Bay ports per C. P. R. palace steamers, N. N. Co.'s Mackinac steamers, or Dominion Transportation Company's boats, to the great fishing stations on Georgian Bay, or by the numerous small steamers running out of Owen Sound.

Routes

Owen Sound and King's Royal Park can be reached via C. P. R. from Toronto, connecting with Buffalo and all points south of that city or west of Toronto; or via G. T. R. from Stratford, connecting with London, Detroit, Sarnia Tunnel and points west; or via C. P. R., N. N. Co.'s, or D. T. Co.'s steamers, connecting at Sault Ste. Marie, Parry Sound, Collingwood, etc., or via Algoma Central Steamship Line at Killarney for Detroit and Toledo. The company's commodious boat "Canada" makes close connections with all trains, and our obliging porters meet all trains and boats.

American Plan

From \$2.50 per day and \$14.00 per week upwards. Special rates to families and parties furnished on application. The management will be pleased to answer any correspondence or enquiries, and will forward descriptive matter on application.

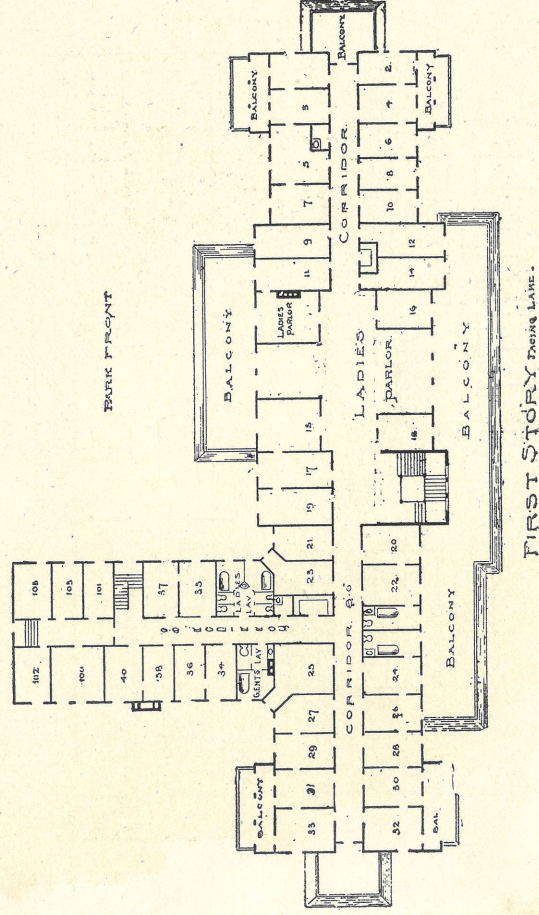
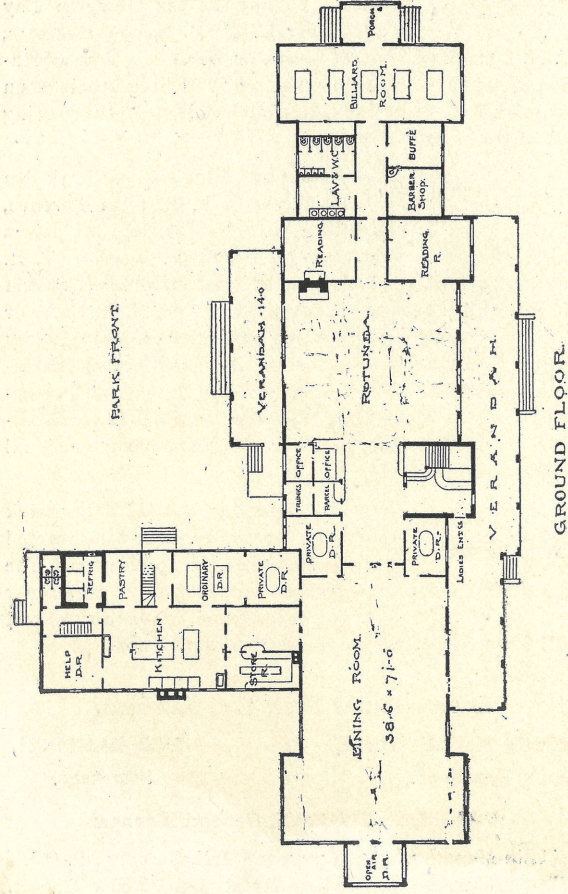
Owen Sound Park Co., Limited.

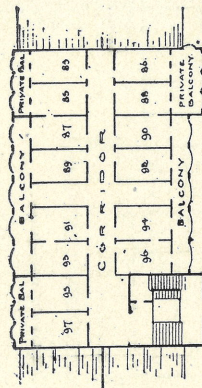
JAMES McLAUCHLAN,
President.

H. E. SAMPSON,
Secretary.

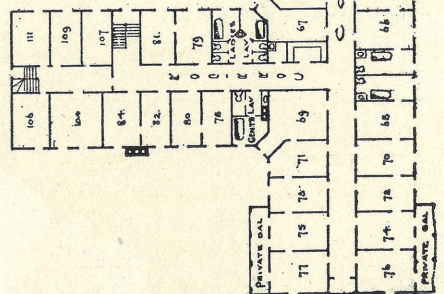
FRANK H. NORMAN, General Manager

[Late Manager of St. Lawrence Hall, Cacouna, P. Q.]
Winter Address: 96 Stanley Street - Montreal, Can.





PLAN OF THIRD STORY.



PLAN OF SECOND STORY.

THE
Traders Bank
 OF
 — Canada. —

OWEN SOUND. Next door to
 Post Office.

Capital (paid up)
\$3,000,000.00

Assets (over)
\$26,000,000.00

Drafts bought and sold at lowest rates.
 A general banking business transacted.

NORMAN ROSS
 Manager

- - Established in 1869 - -

USE

McLauchlan's

Cream Soda -

Biscuits - -



Manufacturers of Fancy Sweet
Biscuits and High Grade
Confectionery.



**McLAUCHLAN & SONS CO.,
LIMITED.**

OWEN SOUND, CANADA.

— **Wholesale Grocers.** —